

# PowerCap® Active™ IP

THE POWERCAP® ACTIVE™ IP SYSTEM IS A LIGHTWEIGHT & ERGONOMIC SOLUTION ABLE TO WORK EFFICIENTLY IN VERY DUSTY ENVIRONMENTS

**TECHNICAL SPECIFICATION**

**RESPIRATORY PROTECTION**

## INSTRUCTIONS FOR USE

The airflow of the unit should be checked prior to use

Fit cap on head and fasten strap to ensure the correct fit

For adequate respiratory protection this cap must be worn with the peak facing forward and adjusted to the size of the user's head

To remove saturated filters unscrew each filter and remove all parts and dispose of them

To fit new filters align the fittings on the filter with those on the filter housing. Push fit and tighten

Care must be taken to ensure that the correct respiratory protection device is selected for the work to be carried out. If in doubt seek professional advice

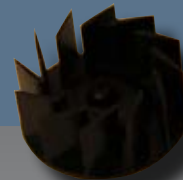
### FILTER:

High efficiency sub-micron particulate filters with High Impact Polystyrene front and back



### IMPELLER:

ABS  
(Acrylonitrile Butadiene Styrene)



### CAP:

Lint Free Textile Cap with rigid drive-unit fixings

### FACESHIELD:

Polycarbonate

### FACSEAL:

Foam with brush nylon covering



## PERFORMANCE

PowerCap® Active IP unit gives a cooling, comfortable supply of filtered air at 160L/Min. Equivalent to FFP2. APF=10

FaceShield protects the user from Medium Energy, High Speed Particles, Dust and Liquid Droplets

Cap protects the user against bumps and scrapes

## CLEANING & MAINTENANCE

The plastic parts can be cleaned with a damp cloth. Chemical or abrasive cleaners should not be used

The cover can be brushed clean. Do not immerse the unit in water

The unit should be stored out of direct sunlight, away from chemicals and not exposed to extremes of temperature

## CONFORMITY

CE 682736

Respiratory performance meets the requirements of: EN 12941 TH1

Hardcap meets the requirements of EN 812

Faceshield meets the requirements of EN166 1.B.3

**POWERCAP®**  
**Active™**  
**IP**

DISCLAIMER: Information presented within this technical specification was correct on date of issue. Information may be subject to change without notice as part of ongoing product improvement and development. To confirm any specific piece of information shown is current please email [technical@jsp.co.uk](mailto:technical@jsp.co.uk)



MANUFACTURING FOR SAFETY  
[WWW.JSPSAFETY.COM](http://WWW.JSPSAFETY.COM)

UKSALES@JSPSAFETY.COM  
TEL: +44 (0)1993 826050



Issued 23/01/2020 - 3

# PowerCap® Active™ IP

**TECHNICAL  
SPECIFICATION**

THE POWERCAP® ACTIVE™ IP SYSTEM IS A LIGHTWEIGHT & ERGONOMIC SOLUTION ABLE TO WORK EFFICIENTLY IN VERY DUSTY ENVIRONMENTS

**RESPIRATORY PROTECTION**

## DIMENSIONS OF OUTER PACKAGING

Quantity: 1

Weight: 1.6kg (Approx)



**HEIGHT:**  
265mm

**WIDTH:**  
240mm

**LENGTH:**  
380mm

## CONTENTS

### PowerCap® Active™ IP:

Comes with Charging Station, Multi-region Charger and Storage Container

Product Weight: 720g (875g with Charger and Dock)



## FEATURES & BENEFITS

Battery Pack and Motor Unit can now be easily removed from the Cap for machine washing

PowerBox Battery Pack is user replaceable for shifts longer than 8 hours (spare PowerBox required)

PowerBox Battery Packs are now available as user friendly spares

Multi-Region Charger compatible with USA, China/Australia UK and Euro sockets

## LIMITATIONS OF USE

Protection will only be offered if the PowerCap® Active™ IP is fitted correctly

The cap, when in contact with the skin may cause allergic reactions to susceptible individuals. If this occurs leave the hazard area, remove the mask and seek medical advice

This product is a respiratory protection device only

Check airflow with the Test Unit before use. Re-test outside of area of use at regular intervals to ensure flow level

Use in well-ventilated areas only, which are not deficient in oxygen and do not contain explosive atmospheres

Ensure the foam skirt is fitted neatly around the face before entering the hazard area

Do not use where exposure to chemical gases may be experienced

The use by date of the filter is printed on the outside of the cartridge

The working life of the filters depends on many factors including work rate, airflow and concentration of any contaminant in the atmosphere

Only JSP PowerCap® Active™ filters can be used as replacements

To obtain maximum workable life from the unit, allow the battery to run down fully before recharging



DISCLAIMER: Information presented within this technical specification was correct on date of issue. Information may be subject to change without notice as part of ongoing product improvement and development. To confirm any specific piece of information shown is current please email [technical@jsp.co.uk](mailto:technical@jsp.co.uk)



MANUFACTURING FOR SAFETY  
[WWW.JSP.CO.UK](http://WWW.JSP.CO.UK)

UKSALES@JSP.CO.UK  
TEL: +44 (0)1993 826050

